

Original MC4-Evo 2000

Renewable Energy | Solar Photovoltaics

EN



Connector MC4-Evo 2000

Insulating part and crimping contact



Female cable coupler PV-KBT4-EVO 2000



Male cable coupler PV-KST4-EVO 2000

The connector of choice for your 2000 V project:

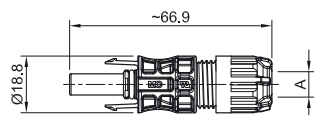
- Combines proven features of the Original MC4 and the Original MC4-Evo 2.
- Approved for voltages of up to DC 2000 V.
- Significant potential for reducing the levelized cost of energy (LCOE).
- Pioneering role in the market: Dual certified according to TÜV Rheinland and UL.
- Proven MULTILAM contact technology with high long-term stability, which ensures consistently low performance loss throughout the entire service life of the connector.

- Over five billion Stäubli connectors already installed in solar power plants worldwide.
- To be used with suitable connectors from the MC4 product family and suitable lead.
- For field and factory assembly.
- Can be processed with existing Stäubli tools.

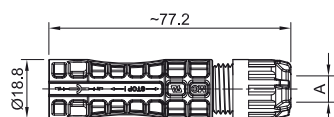
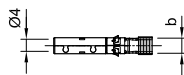
Technical data

Technical data	
Ambient temperature range (IEC)	-40 °C ... +85 °C
Operating temperature range (UL)	-40 °C ... +85 °C
Upper limiting temperature	115 °C
Transportation/storage temperature range	-30 °C ... +60 °C
Transportation/storage relative humidity	< 70 %
Degree of protection, mated	IP65/IP68 (1 m, 1 h)
Degree of protection, unmated	IP2X
Overvoltage category	III
Class (IEC)	II
Contact resistance of plug connectors	< 0.2 mΩ
Rated impulse voltage	27.2 kV (DC 2000 V)
Contact system	MULTILAM
Type of termination	Crimping
Contact material	Copper, tin plated
Insulation material	PC
Locking system	Locking type
Flame class acc. to UL94	Level V0
Internal salt mist test acc. to IEC 60068-2-52 (test method 6)	yes
TÜV Rheinland certifications number (2PfG 2925/01.23)	R 50608124
UL certifications number (UL6703 and CSA C22.2 No. 182.5) (cULus Listed and UL Recognized)	E343181
Temperature Level according to IEC TS 63126	Level 2

Dimensional drawings



Female cable coupler PV-KBT4-EVO 2000



Male cable coupler PV-KST4-EVO 2000



Ordering information

Order No.	Type	Socket	Plug	Outer diameter of cable	2PFG 2925/01.23			UL 6703			Approvals	
					A (mm)	mm ²	DC V	A	AWG	DC V	A	TÜV
32.0484P0001	PV-KBT4-EVO HV2/6X	x		5.5 – 7.4	4	2000	42				x	x
					6	2000	47					
								12	2000	39		
								10	2000	50		
32.0485P0001	PV-KST4-EVO HV2/6X		x	5.5 – 7.4	4	2000	42				x	x
					6	2000	47					
								12	2000	39		
								10	2000	50		
32.0482P0001	PV-KBT4-EVO HV2/6II	x		7.0 – 8.8	4	2000	42				x	x
					6	2000	47					
								12	2000	39		
								10	2000	50		
32.0483P0001	PV-KST4-EVO HV2/6II		x	7.0 – 8.8	4	2000	42				x	x
					6	2000	47					
								12	2000	39		
								10	2000	50		
32.0488P0001	PV-KBT4-EVO HV2/10X	x		5.5 – 7.4	10	2000	58				x	x
								8	2000	70		
32.0489P0001	PV-KST4-EVO HV2/10X		x	5.5 – 7.4	10	2000	58				x	x
								8	2000	70		
32.0486P0001	PV-KBT4-EVO HV2/10II	x		7.0 – 8.8	10	2000	58				x	x
								8	2000	70		
32.0487P0001	PV-KST4-EVO HV2/10II		x	7.0 – 8.8	10	2000	58				x	x
								8	2000	70		

Note:

For more detailed information concerning the suitable cable gland range, please consult corresponding assembly instructions (see “Further information”).

Note:

Unmated connectors must be protected from any contamination using Stäubli sealing caps. For ordering information concerning Stäubli sealing caps, please consult corresponding catalog (see “Further information”).

Further Information



Tools and accessories

For related Stäubli tools and accessories please consult:

www.staubli.com/re-downloads.html → English → catalog → **Tools and accessories**



Assembly instructions

For assembly instructions for "MC4-Evo ready connector" please consult:

www.staubli.com/re-downloads.html → English → Assembly instructions → **MA719**

Connector MC4-Evo 2000

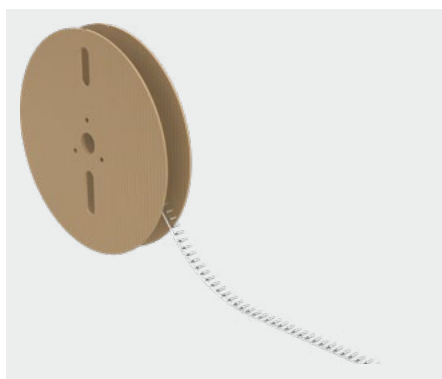
Insulating part and crimping contacts on reel



Female cable coupler PV-KBT4-EVO 2000



Male cable coupler PV-KST4-EVO 2000



Reel with contacts

The connector of choice for your 2000 V project:

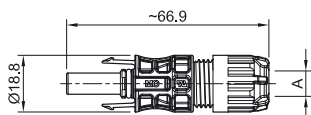
- Combines proven features of the original MC4 and the original MC4-Evo 2.
- Approved for voltages of up to DC 2000 V.
- Significant potential for reducing the levelized cost of energy (LCOE).
- Pioneering role in the market: Dual certified according to TÜV Rheinland and UL.
- Proven MULTILAM technology with high long-term stability, which ensures consistently low performance loss throughout the entire service life of the plug connector.
- Over five billion Stäubli connectors with this unique contact technology have already been installed in solar power plants worldwide.
- To be used with suitable mated connectors from the MC4 product family and suitable lead.
- For field assembly and factory assembly.
- Can be processed with existing Stäubli tools.

Technical data

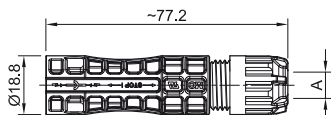
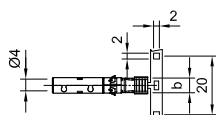
Technical data	
Ambient temperature range (IEC)	-40 °C ... +85 °C
Operating temperature range (UL)	-40 °C ... +85 °C
Upper limiting temperature	115 °C
Transportation/storage temperature range	-30 °C ... +60 °C
Transportation/storage relative humidity	< 70 %
Degree of protection, mated	IP65/IP68 (1 m, 1 h)
Degree of protection, unmated	IP2X
Overvoltage category	III
Class (IEC)	II
Contact resistance of plug connectors	< 0.2 mΩ
Rated impulse voltage	27.2 kV (DC 2000 V)
Contact system	MULTILAM
Type of termination	Crimping

Technical data	
Contact material	Copper, tin plated
Insulation material	PC
Locking system	Locking type
Flame class acc. to UL94	Level V0
Internal salt mist test acc. to IEC 60068-2-52 (test method 6)	yes
TÜV Rheinland certifications number (2PfG 2925/01.23)	R 50608124
UL certifications number (UL6703 and CSA C22.2 No. 182.5) (cULus Listed and UL Recognized)	E343181
Temperature Level according to IEC TS 63126	Level 2

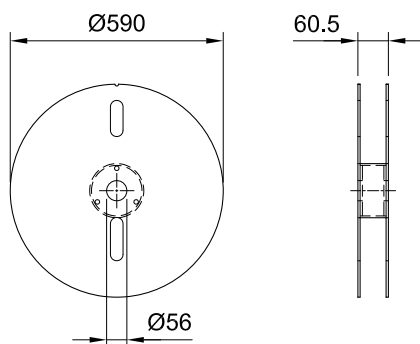
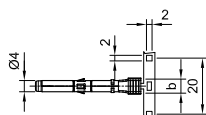
Dimensional drawings



Female cable coupler PV-KBT4-EVO 2000



Male cable coupler PV-KST4-EVO 2000



Reel with contacts

Ordering information

Order No.	Type	Socket	Plug	Outer diameter of cable	2PFG 2925/01.23			UL 6703			Approvals		Contacts per reel
					A (mm)	mm ²	DC V	A	AWG	DC V	A	TÜV	
32.0484P2000	PV-KBT4-EVO HV2/6X	x		5.5 – 7.4	4	2000	42				x	x	2000
					6	2000	47						
								12	2000	39			
								10	2000	50			
32.0485P2000	PV-KST4-EVO HV2/6X		x	5.5 – 7.4	4	2000	42				x	x	2000
					6	2000	47						
								12	2000	39			
								10	2000	50			
32.0482P2000	PV-KBT4-EVO HV2/6II	x		7.0 – 8.8	4	2000	42				x	x	2000
					6	2000	47						
								12	2000	39			
								10	2000	50			
32.0483P2000	PV-KST4-EVO HV2/6II		x	7.0 – 8.8	4	2000	42				x	x	2000
					6	2000	47						
								12	2000	39			
								10	2000	50			
32.0488P1500	PV-KBT4-EVO HV2/10X	x		5.5 – 7.4	10	2000	58				x	x	1500
								8	2000	70			
32.0489P1500	PV-KST4-EVO HV2/10X		x	5.5 – 7.4	10	2000	58				x	x	1500
								8	2000	70			
32.0486P1500	PV-KBT4-EVO HV2/10II	x		7.0 – 8.8	10	2000	58				x	x	1500
								8	2000	70			
32.0487P1500	PV-KST4-EVO HV2/10II		x	7.0 – 8.8	10	2000	58				x	x	1500
								8	2000	70			

Note:

For more detailed information concerning the suitable cable gland range, please consult corresponding assembly instructions (see “Further information”).

Note:

Unmated connectors must be protected from any contamination using Stäubli sealing caps. For ordering information concerning Stäubli sealing caps, please consult corresponding catalog (see “Further information”).

Further Information



Tools and accessories

For related Stäubli tools and accessories please consult:

www.staubli.com/re-downloads.html → English → catalog → **Tools and accessories**



Assembly instructions

For assembly instructions for "Connector MC4-Evo 2000" please consult:

www.staubli.com/re-downloads.html → English → Assembly instructions → **MA719**



● Stäubli Units ○ Representatives/Agents

Global presence of the Stäubli Group

www.staubli.com