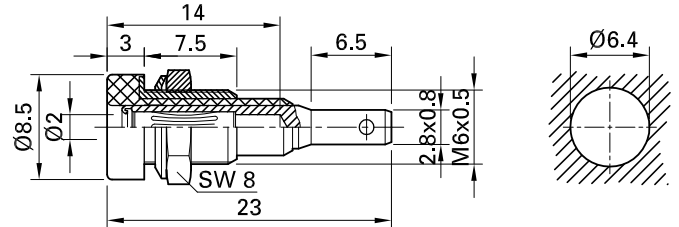
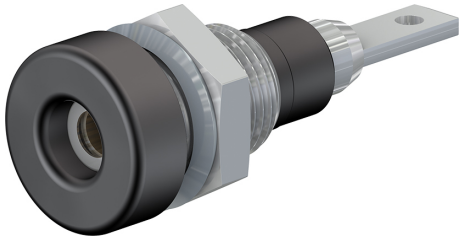


# LB-IF2R



Item number 23.0060-\*

Insulated, Ø 2 mm with spring-loaded MULTILAM. Machined brass. Metal thread jacket on the insulation. The socket can be screw-mounted in predrilled panels. Flat connecting tab 2.8 mm x 0.8 mm.

Technical data	
Diameter of plug system	2 mm
Rated Values	30 V, 10 A / 60 V, 10 A
Surface treatment electrical contact	Optalloy
Base material electrical contact	CuZn
Standard color(s) *	<span style="background-color: #ffff00; border: 1px solid black; padding: 2px;">20</span> <span style="background-color: #000000; color: white; border: 1px solid black; padding: 2px;">21</span> <span style="background-color: #ff0000; color: white; border: 1px solid black; padding: 2px;">22</span> <span style="background-color: #0000ff; color: white; border: 1px solid black; padding: 2px;">23</span> <span style="background-color: #ffff00; border: 1px solid black; padding: 2px;">24</span> <span style="background-color: #00ff00; border: 1px solid black; padding: 2px;">25</span> <span style="background-color: #800080; border: 1px solid black; padding: 2px;">26</span> <span style="background-color: #808080; border: 1px solid black; padding: 2px;">27</span> <span style="background-color: #808080; border: 1px solid black; padding: 2px;">28</span> <span style="background-color: #808080; border: 1px solid black; padding: 2px;">29</span>
Thread	M6x0,5
Test accessory acc. to	IEC EN 61010-2-030
Component parts	BI-LB-IF2R; MU/M6x0,5; SP2
Remarks	Accessories: Flat connecting receptacle FSH2,8x0,8