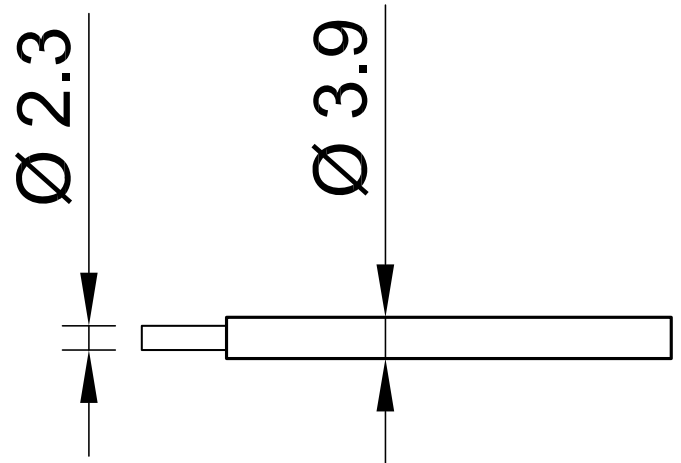


PLAST-1V 2,5



Item number 60.7230-*

Highly flexible stranded wire 2,5 mm² with reinforced insulation.

Technical data	
Rated Values	AC 1000 V, 32 A / DC 1500 V, 32 A
Standard color(s) *	21 22 23
Lead insulation	TPE
Temperature range	-30 °C ... +90 °C
Strand design (n x Ø mm)	651 x 0,07
Lead weighth	31.0 kg/km
Conductor diameter	2.3 mm
Cable diameter	3.9 mm
Insulation thickness	0.8 mm
Approvals	CE, UKCA, EAC