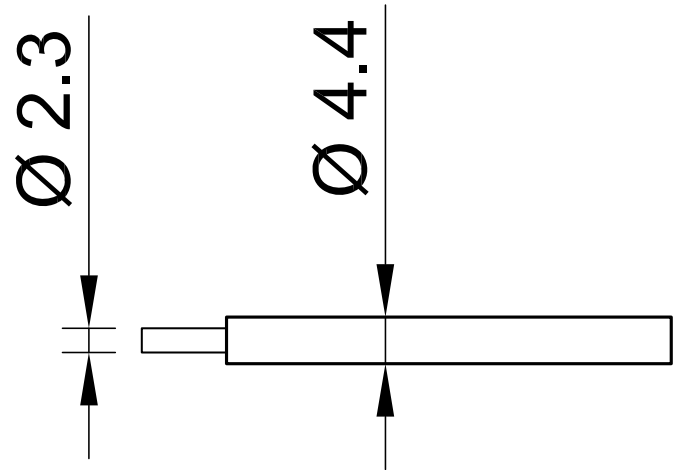


# PLAST-2V 2,5



Item number 60.7270-\*

Highly flexible stranded wire 2,5 mm<sup>2</sup> with reinforced, double-layer insulation for the highest safety

Technical data	
Rated Values	AC 1000 V, 32 A / DC 1500 V, 32 A
Standard color(s) *	<span style="background-color: black; color: white; padding: 2px;">21</span> <span style="background-color: red; color: white; padding: 2px;">22</span> <span style="background-color: blue; color: white; padding: 2px;">23</span>
Lead insulation	TPE
Temperature range	-30 °C ... +90 °C
Strand design (n x Ø mm)	651 x 0,07
Lead weight	34.0 kg/km
Conductor diameter	2.3 mm
Cable diameter	4.4 mm
Insulation thickness	1.05 mm
Approvals	CE, UKCA, EAC