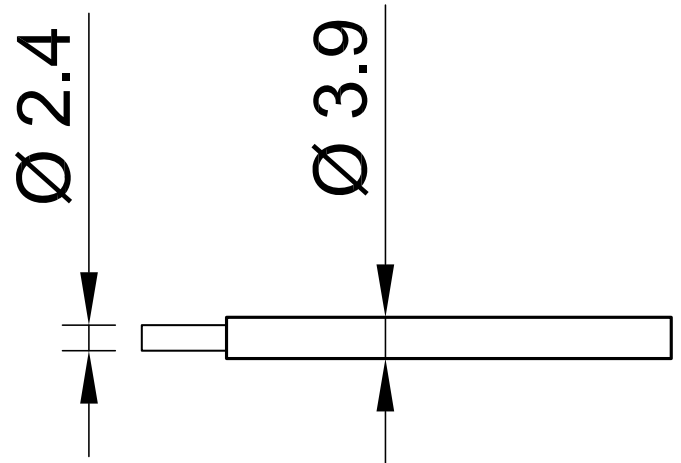


SILI-E 2,5 SN



Item number 61.7537-*

Super flexible basic insulated stranded wire 2,5 mm² (tinned).

Technical data	
Rated Values	AC 600 V, 32 A
Standard color(s) *	21 22 23
Lead insulation	SIL
Temperature range	-50 °C ... +150 °C
Strand design (n x Ø mm)	651 x 0,07
Lead weighth	33.0 kg/km
Conductor diameter	2.4 mm
Cable diameter	3.9 mm
Insulation thickness	0.75 mm
Approvals	UR, CE, UKCA, EAC