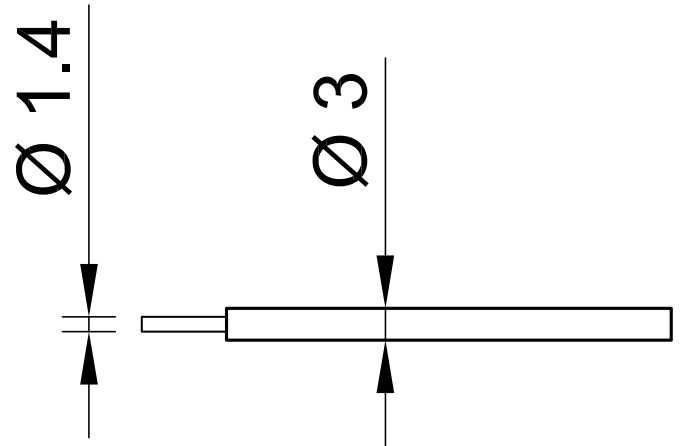


SILI-E 1,0



Item number 61.7554-*

Super flexible basic insulated stranded wire 1,0 mm².

Technical data	
Rated Values	AC 600 V, 19 A
Standard color(s) *	20 21 22 23 24 25
Lead insulation	SIL
Temperature range	-50 °C ... +90 °C
Strand design (n x Ø mm)	259 x 0,07
Lead weight	16.0 kg/km
Conductor diameter	1.4 mm
Cable diameter	3.0 mm
Insulation thickness	0.8 mm
Approvals	UR, CE, UKCA, EAC