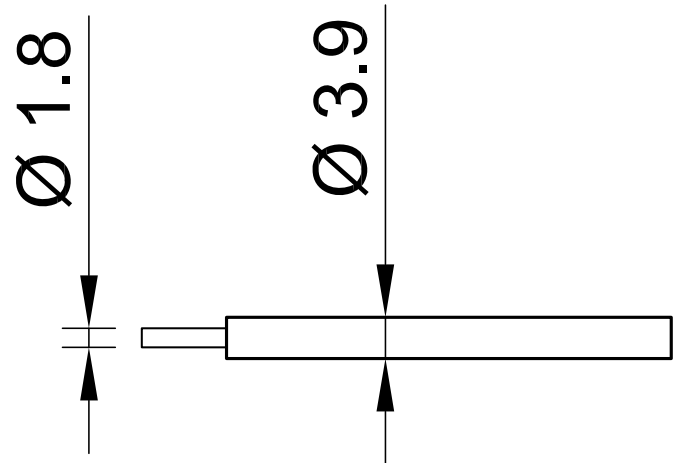


# SILI-1V 1,5



Item number 61.7608-\*

Super flexible stranded wire 1,5 mm<sup>2</sup> with reinforced insulation.

Technical data	
Rated Values	AC 1000 V, 24 A / DC 1500 V, 24 A
Standard color(s) *	<span style="background-color: black; color: white; padding: 2px;">21</span> <span style="background-color: red; color: white; padding: 2px;">22</span> <span style="background-color: blue; color: white; padding: 2px;">23</span>
Lead insulation	SIL
Temperature range	-50 °C ... +90 °C
Strand design (n x Ø mm)	770 x 0,05
Lead weighth	25.0 kg/km
Conductor diameter	1.8 mm
Cable diameter	3.9 mm
Insulation thickness	1.05 mm
Approvals	UR, CE, UKCA, EAC