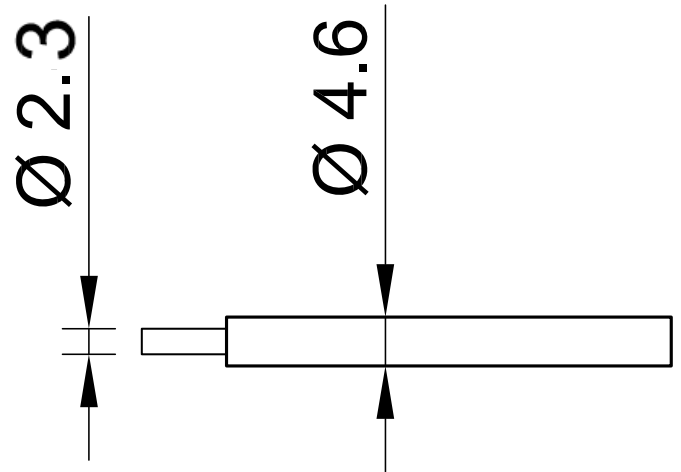


SILI-2V 2,5



Item number 61.7667-*

Super flexible stranded wire 2,5 mm² with reinforced, double-layer insulation for the highest safety.

Technical data	
Rated Values	AC 1000 V, 32 A / DC 1500 V, 32 A
Standard color(s) *	21 22 23 28
Lead insulation	SIL
Temperature range	-50 °C ... +90 °C
Strand design (n x Ø mm)	651 x 0,07
Lead weight	38.0 kg/km
Conductor diameter	2.3 mm
Cable diameter	4.6 mm
Insulation thickness	1.15 mm
Approvals	UR, CE, UKCA, EAC