

FAST MOVING TECHNOLOGY

STÄUBLI

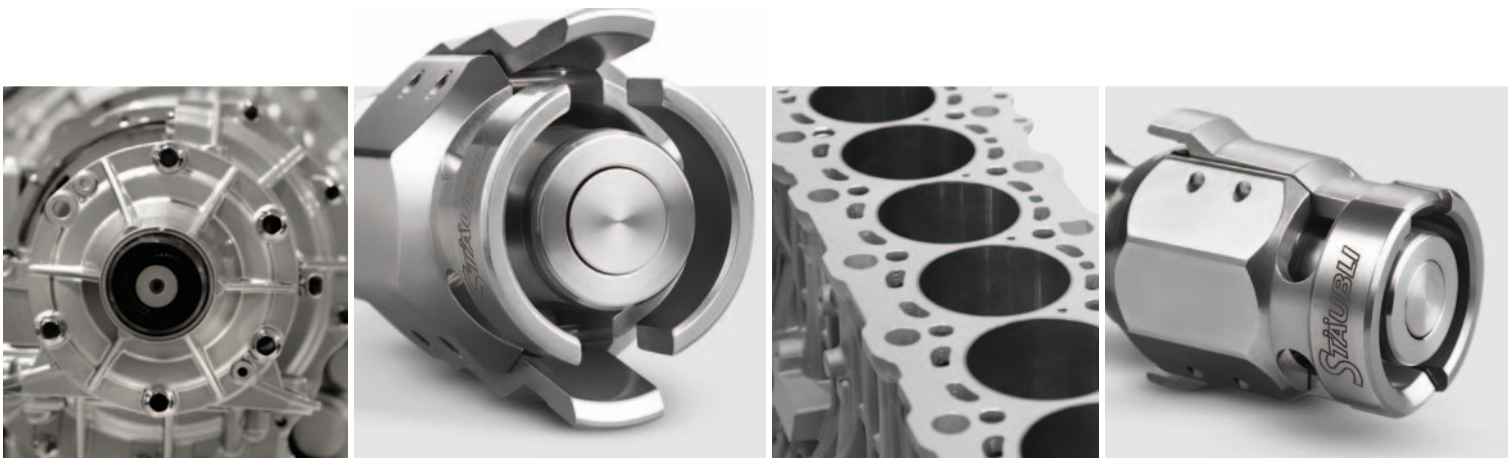
HTI quick-release couplings

Temperature control | High temperature



High temperature
technology...





... for safe control

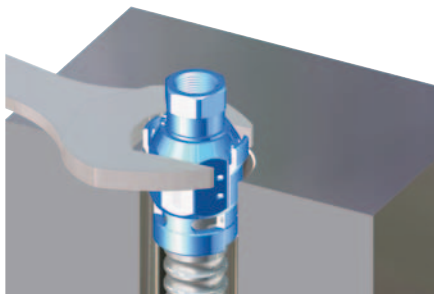


US 9 863 566
and other countries

Easy to install

The tool attachment plug lets you install couplings in places that are difficult to access, as a spanner wrench can be used on the body.

In addition, a DIN 7603 compliant copper seal* will provide perfect tightness between the coupling and your interface.



* Seal not supplied

Quick maintenance

The design of the HTI without any seal in the fluid stream means that it does not require any specific maintenance.

The single seal can be replaced in just a few seconds, as often as necessary and without disassembly, guaranteeing continuous tightness at lower cost.

Designed to withstand high temperatures

The internal design of the HTI coupling, with its double shutoff technology with no internal seal and metal/metal tightness, enables it to resist high temperatures up to +572 degrees.

Safe, robust double-action locking

The coupling is first locked by bayonet, using a quick, simple push/turn action, enabling you to check visually that it is locked, even under severe clogging conditions.

Then two safety levers fasten the bayonet for optimum safety.

This totally reliable technology provides excellent resistance to vibration and pollution.

Easy to use

The special design of the HTI ensures it is comfortable to handle and grip for easy coupling.

Applications

- Temperature control fluids
- Temperature control of molds on injection presses in the plastics industry
- Temperature control in metallurgical (die casting, iron and steel), glass, composites, aluminum and magnesium pressure die casting, and other industries

Technical characteristics



		HTI 09	HTI 12	HTI 16	HTI 25
Nominal diameter DN (in.)		3/8"	1/2"	5/8"	1"
Maximum allowable pressure PS (psi)		174	174	174	174
Minimum and maximum allowable temperatures TS * (°F) when coupled		+32 to +572	+32 to +572	+32 to +572	+32 to +572
Shut-off	double				

Tightness

- Fluorocarbon (FPM) seal: **JV**
- Perfluorocarbon (FFKM) seal: **JK**

Construction

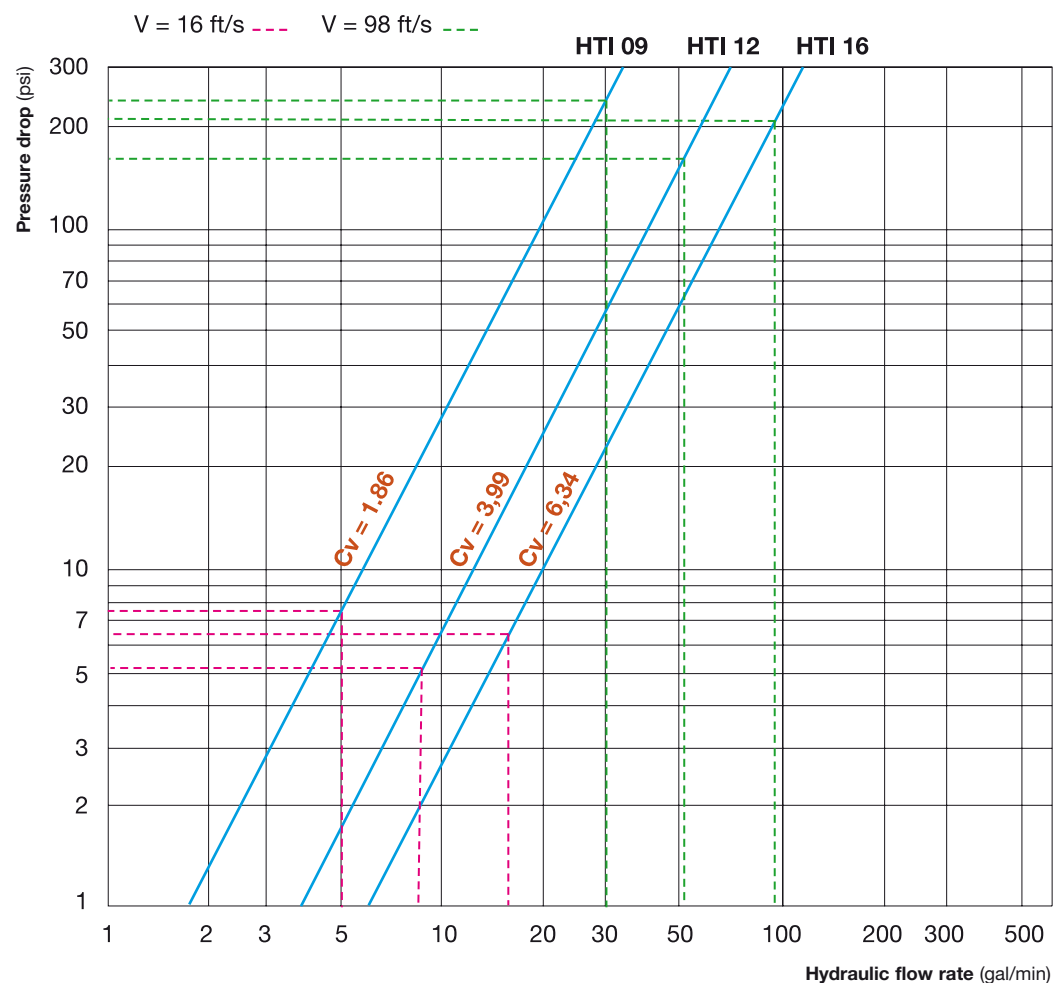
Predominantly stainless steel

Minimum and maximum allowable temperatures TS

+32 to +572 °F* depending on the fluid.

* Seal to be replaced as often as required based on your operating conditions.

Flow rate / pressure drop hydraulic charts



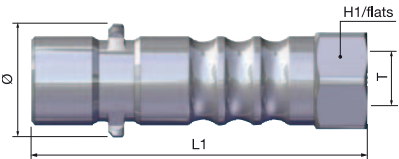
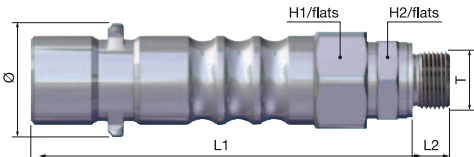
Test conditions:

- Fluid: water
- Direction of flow: coupling → plug

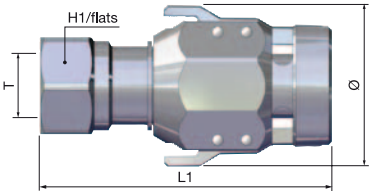
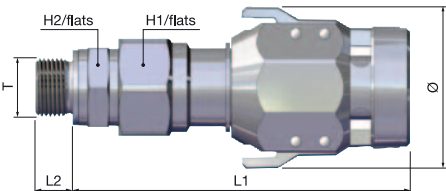


Part numbers

Couplings

Designation	Model	Thread T	Dimensions (in.)					Part number
			Ø	L1	L2	H1/flats	H2/flats	
1. Female thread 	HTI 09	G 3/8	1.26	3.70		1.06		HTI 09.1102/IA
		G 1/2	1.26	3.70		1.06		HTI 09.1103/IA
	HTI 12	G 1/2	1.50	4.25		1.26		HTI 12.1103/IA
		G 3/4	1.50	4.25		1.26		HTI 12.1104/IA
	HTI 16	G 3/4	1.89	5.31		1.61		HTI 16.1104/IA
	HTI 25	G 1 1/4	2.87	7.09		2.36		HTI 25.1106/IA
2. Male thread 	HTI 09	G 3/8	1.26	4.19	0.47	1.06	0.87	HTI 09.1152/IA
		G 1/2	1.26	4.27	0.55	1.06	1.06	HTI 09.1153/IA
	HTI 12	G 1/2	1.50	4.82	0.55	1.26	1.06	HTI 12.1153/IA
		G 3/4	1.50	4.92	0.63	1.26	1.26	HTI 12.1154/IA
	HTI 16	G 3/4	1.89	5.98	0.63	1.61	1.26	HTI 16.1154/IA
	HTI 25	G 1 1/4	2.87	7.87	0.79	2.36	1.97	HTI 25.1156/IA

Plugs

Designation	Model	Thread T	Dimensions (in.)					Part number
			Ø	L1	L2	H1/flats	H2/flats	
1. Female thread 	HTI 09	G 3/8	1.77	3.23		1.06		HTI 09.7102/IA/JV*
		G 1/2	1.77	3.23		1.06		HTI 09.7103/IA/JV*
	HTI 12	G 1/2	2.01	3.74		1.26		HTI 12.7103/IA/JV*
		G 3/4	2.01	3.74		1.26		HTI 12.7104/IA/JV*
	HTI 16	G 3/4	2.56	4.57		1.61		HTI 16.7104/IA/JV*
	HTI 25	G 1 1/4	3.54	6.18		2.36		HTI 25.7106/IA/JV*
2. Male thread 	HTI 09	G 3/8	1.77	3.72	0.47	1.06	0.87	HTI 09.7152/IA/JV*
		G 1/2	1.77	3.80	0.55	1.06	1.06	HTI 09.7153/IA/JV*
	HTI 12	G 1/2	2.01	4.31	0.55	1.26	1.06	HTI 12.7153/IA/JV*
		G 3/4	2.01	4.41	0.63	1.26	1.26	HTI 12.7154/IA/JV*
	HTI 16	G 3/4	2.56	5.24	0.63	1.61	1.26	HTI 16.7154/IA/JV*
	HTI 25	G 1 1/4	3.54	6.97	0.79	2.36	1.97	HTI 25.7156/IA/JV*

* Fluorocarbon seal (JV) standard. Perfluoroelastomer seal (JK) also available: replace JV code with JK at the end of the part numbers of the plugs.

Part numbers

Accessories

Seal extraction tool



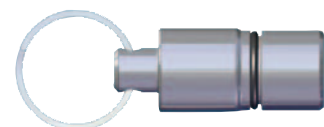
Part number

S00624913

Set of replacement seals

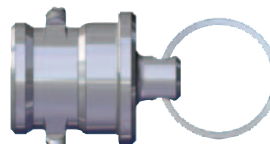
Model	Type of seal	Quantity	Part number
HTI 09	JV	1	HTI 09.9702/JV
		10	HTI 09.9702/JV/Q10
		50	HTI 09.9702/JV/Q50
	JK	1	HTI 09.9702/JK
		10	HTI 09.9702/JK/Q10
		50	HTI 09.9702/JK/Q50
HTI 12	JV	1	HTI 12.9702/JV
		10	HTI 12.9702/JV/Q10
		50	HTI 12.9702/JV/Q50
	JK	1	HTI 12.9702/JK
		10	HTI 12.9702/JK/Q10
		50	HTI 12.9702/JK/Q50
HTI 16	JV	1	HTI 16.9702/JV
		10	HTI 16.9702/JV/Q10
		50	HTI 16.9702/JV/Q50
	JK	1	HTI 16.9702/JK
		10	HTI 16.9702/JK/Q10
		50	HTI 16.9702/JK/Q50
HTI 25	JV	1	HTI 25.9702/JV
		10	HTI 25.9702/JV/Q10
		50	HTI 25.9702/JV/Q50
	JK	1	HTI 25.9702/JK
		10	HTI 25.9702/JK/Q10
		50	HTI 25.9702/JK/Q50

Cap for coupling



Model	Part number
HTI 09	HTI 09.8500
HTI 12	HTI 12.8500
HTI 16	HTI 16.8500
HTI 25	HTI 25.8500

Cap for plug



Model	Part number
HTI 09	HTI 09.8550
HTI 12	HTI 12.8550
HTI 16	HTI 16.8550
HTI 25	HTI 25.8550



● Stäubli Units ○ Representatives/Agents

Global presence of the Stäubli Group

www.staubli.com